

FI114991 80 lb/hr Deka IV Long USCar



Features

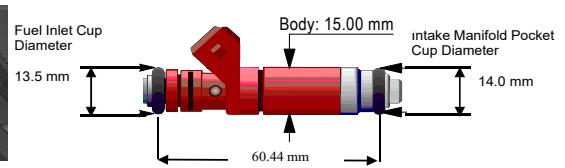
Fuel Compatibility	Standard Gasolines & Ethanol Flex Fuels
Fuel Pressure	300 kPa
Static Flow Rate	n-Heptane: 10 g/sec (80 lb/hr, 875 cc)
Dynamic Flow Rate	n-Heptane: mg/pulse (18.6 mg/pulse 2.5 ms PW, 20 ms Period)
Offset	0.65 ms
Minimum Linear PW	1.9 ms
Linear Flow Range (SAE)	7.97
Opening/Closing Time	1.3 ms / 0.7 ms
Coil Resistance	12.0 *
Injector Inductance	11.6 mH
SMOV / DMOV	4.16 V / 4.64 V
Connector	UScar
Spray Pattern	Pencil
Installation Compatibility	Deka I, IV Long, V Long, & VII Long Installation Compatible
Identification Shell Color	Blue

Connector

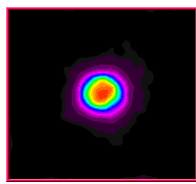
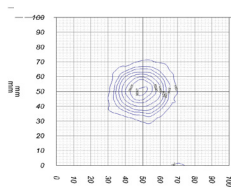
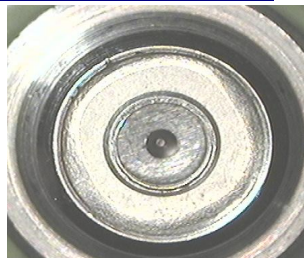
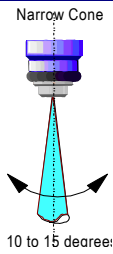


USCAR

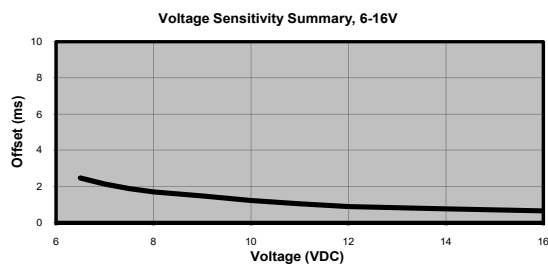
Basic Dimensions



Spray Characteristics (1 Hole Orifice)



Voltage Sensitivity



Linearity

Characteristic Injector Flow Curve

